



Queens Valentine R9



Own Daughters of Valentine!

Lot 1 Flush on Valentine

Offering the right to flush PCC Queens Valentine R9.
ASA #: 2293348

Meyer Ranch 734

3C Macho M450 BZ

3C Crocus H112B

Northern Improvement 4480

EXG Queen M9 R3

R3 Queen K3

Lot 1A Valenine Maternal Sib Embryos

Offering 1 package of 2 embryos to the mating below.
Calves will be 1/2 Simmental

WLE Power Stroke

GWS Ebony's Trademark 6N

NJC Ebony Antoinette

Northern Improvement 4480

EXG Queen M9 R3 (ASA #: 2226875)

R3 Queen K3

Lot 1B Valenine Maternal Sib Embryos

Offering 1 package of 3 embryos to the mating below.
Calves will be 1/2 Simmental

BOZ Red Coat

Ankonian Red Caesar

GFI Candace G51

Northern Improvement 4480

EXG Queen M9 R3 (ASA #: 2226875)

R3 Queen K3

Here is a golden ticket opportunity to flush the \$120,000 valued PCC Queens Valentine. This female needs little introduction having already been named 2006 NAILE Champion Percentage female, as well as the 2006 & 2007 Reserve Champion Percentage Simmental female. But her production record in the show ring has already been surpassed in the pasture by producing the \$22,500 Built Right daughter, Right to Love, as well as another Built Right daughter who commanded \$18,000. All of these accomplishments being made in just 4 years of production. No matter how you choose to mate this female success is guaranteed. Simply raise your hand and enjoy the ride! Lot 1 flush sells with a guarantee of 6 transferrable embryos with a cap of 10 transferable embryos. Lots 1A & 1B are maternal sibling embryos to the exceptional PCC Queens Valentine female, these two embryo packages sell with no guarantee, as Valentine's dam is now deceased. Embryos being offered by Rocking P Livestock.

Consigned by, Sugar Creek Ranch, Rocking P Livestock, & Beckett Cattle Company



TJSC So Sweet 104X



KS Miss She's So Sweet, dam of So Sweet 104X



Full sibling to 104X



TJSC Optimus Prime

Lot *Flush on So Sweet 104X*

2 Offering the right to flush TJSC So Sweet 104X.
ASA #: 2549413

CNS Dream On L186

SVF Steel Force S701

SVF Sheza Beauty L901

GF Maximus N391

KS Miss She's So Sweet 98R

LVCC Mrs Picasso 180

Lot 2 presents it's future owner the unique opportunity to get in on the ground floor of one of the hottest most proven percentage Simmental cow families in the country. The Steel Force x She's So Sweet mating has already produced the 2010 Simmental Junior Nationals 4th Overall Female as well as the hot new AI sire Optimus Prime. Not to mention the fact that TJSC So Sweet 104X has already been named the 2010 NAILE Reserve Champion Percentage Simmental female. This flush opportunity will present it's new owner with the option to mate this 3/4 female for either PB Simmentals or go after the Low percentage community. Regardless of your choice this female will carry any bull you choose to use. Flush sells with a guarantee of 6 transferrable embryos with a cap of 10 transferable embryos.

Consigned by, Sugar Creek Ranch



Rocky Hills Mary



*Steers by
Heat Wave x
Rocky Hills Mary*



Heat Wave

Lot Rocky Hills Mary Embryos

3-3B Offering 3 package of 3 embryos by the mating below. Calves will be 1/2 Simmental or Club Calf. Heat Seeker

Heat Wave (Yellow Top)
Fawl Chi x Ma x Angus
WLE Bandwagon

Rocky Hills Mary (ASA #: 2152007)
Rocky Hills Foxy Babe

You've heard the story and seen the progeny, now is your chance to cash in on this banner producing female. Rocky Hills Mary is by far the greatest PB Simmental female in history for producing Club Calf influenced show steers. Her mating to Heat Wave has netted 3 State Fair Champion Steers as well as countless Jackpot, County Fair, & Expo titles. This female just flat works when mated to Heat Wave. It is all too rare to find a sure thing in the cattle business, but this mating is as close to a sure thing as you will ever find. Offering 3 packages of 3 embryos to the mating of Heat Wave Yellow Top Semen x Rocky Hills Mary, offering no guarantee on these embryos as I no longer have any pre-clone Heat Wave semen.

Consigned by, Bobby Price Cattle Company

Lot Heat Wave Semen

4-4A Offering 2 packages of 3 units of Heat Wave semen, flush quality.

Both packages contain ABS tested flush quality, pre-clone Heat Wave semen.

Consigned by, Bonnell Farms Show Cattle

Lot Heat Wave Semen

4B-4D Offering 3 packages of 5 units of Heat Wave semen, flush quality.

Both packages contain ABS tested flush quality, semen collected in 2003.

Consigned by, Chris Effling

Lot Heat Wave 13 Sexed Semen

5-5B Offering 3 packages of 2 units of Heat Wave 13 Sexed Male Semen, flush quality.

Offering 6 total units, selling in packages of 2 units, of Heat Wave 13 Sexed Male Semen, winning bidder will have the option to take all 6 units.

Consigned by, Scheetz Cattle Company



Brooks Steel Magnolia X57

Lot *Peggy Sue Embryos*

6 Offering 1 package of 3 embryos by the mating below. Calves will be purebred Simmental.

CNS Dream On L186

SVF Steel Force S701

SVF Sheza Beauty L901
GW Lucky Break 047G

Brooks Peggy Sue

WS Katie 057

Lot *Peggy Sue Embryos*

6A Offering 1 package of 3 embryos by the mating below. Calves will be purebred Simmental.

SVF Steel Force S701

ZKCC Chopper 844U

Ms Meyer 31S1 of TH
GW Lucky Break 047G

Brooks Peggy Sue

WS Katie 057



ZKCC Chopper

Lot *ZKCC Chopper Semen*

7 Offering 1 package of 5 units of Chopper Semen, flush quality. Consigned by, Mayhew Show Cattle

You have come to expect exciting genetics in the Rare Semen & Embryo Auction, and this lot is no exception. The Lot 6 mating, by Steel Force, will result in full siblings to the 2011 Simmental Junior Nationals Champion Simmental female, Brooks Steel Magnolia X57. This mating has not only clicked by producing a big time show heifer, but has also produced a bull calf currently being shown by Jason Elmore, of OK. This bull has garnered his share of attention on the show circuit this summer. This spring the mating by Chopper produced a heifer that has garnered quite a bit of attention on our farm. Peggy Sue has proven herself in our embryo program, and is ready to go to work for you. Be sure you are on hand September 3rd to put yourself in the driver seat for the 2012 show and sale season. Offering 1 package of 3 embryos with a guarantee of one pregnancy, on each of the matings above, if embryo work is done by licensed embryologist.

Consigned by, Brooks Cattle Company

Lot *LKR Daisy Duke Pregnancy*

8 Fall born guaranteed heifer pregnancy produced at Trans Ova, using In-Vitro fertilization.

CNS Dream On L186

Drake In Command

Drake P129
Sandeen's SOS

LKR Daisy Duke (ASA #: 2515833)

RSF Maid to Order 943R

Pregnant recip due to calve September 10, 2011. Resulting heifer will be a PB Simmental.

Here is an exciting opportunity to get in on the ground floor of exciting Simmental genetics. This pregnancy represents the combination of the 2010 American Royal Champion Foundation Female and the popular sire Drake In Command. If you are looking to put your operation in the green this fall, then look no further than this guaranteed heifer pregnancy.

Consigned by, Matthew Pemberton



LKR Daisy Duke

Lot *Miss USA Embryos*

9 Offering 1 package of 3 embryos by the mating below. Calves will be half-blood Simmental.

DJ Salute

Sandeen's SOS Sexed Heifer Semen

Tharpe Angus K022
Meyer Ranch 734

Miss USA (ASA#: 2342210)

WAG Hairietta 9145J



LKR Daisy Duke

Lot *Miss USA Embryos*

9A Offering 1 package of 3 embryos by the mating below. Calves will be Club Calves.

Heat Wave

Monopoly

Miss Hazel
Meyer Ranch 734

Miss USA (ASA#: 2342210)

WAG Hairietta 9145J



Miss USA

Lot *Miss USA Embryos*

9B Offering 1 package of 3 embryos by the mating below. Calves will be Club Calves.

Heat Wave

Walks Alone

Draft Pick/Full Flush Cow
Meyer Ranch 734

Miss USA (ASA#: 2342210)

WAG Hairietta 9145J

If you are in the market for a power packed pedigree, then look no further than this group of embryos. Miss USA, a direct daughter of the infamous WAG Hairietta, won the Triple Crown as a low percentage Simmental. This Meyer daughter has produced not only high dollar low percentage Simmentals, but has also proven her value as a steer making specialist. The proof of this being her Monopoly steer that hit the ground this spring. These rare and valuable embryos are sure to make you famous. Offering 1 package of 3 embryos with a guarantee of one pregnancy, on each of the matings above, if embryo work is done by licensed embryologist. No guarantee will be given on the Sexed SOS embryos, due to the fact that we no longer have any Sexed SOS semen left in the tank.

Consigned by, Hara Farms



Steel Force x Miss USA

SOS x Miss USA



Lot DCC Dixie Erica 258 Embryos

10 Offering 1 package of 3 embryos by the mating below. Calves will be Mainetainers.

Ice Pick

Irish Whiskey

NTC 615 Ever Ready
OCC Freestyle 921F

DCC Dixie Erica 258

Dixie Erica 001

Lot DCC Dixie Erica 258 Embryos

10A Offering 1 package of 3 embryos by the mating below. Calves will be half-blood Simmentals.

CNS Dream On L186

Driver

3C Melody M668 BZ
OCC Freestyle 921F

DCC Dixie Erica 258

Dixie Erica 001

258 is moderately sized, big bodied and especially wide made, plus portrays the amazing style and balance of her dynamic dam, Dixie Erica 001. 258 is argueably the most versatile female in our donor pen, thus our decision to flush her to both Irish Whiskey and Driver. The Irish Whiskey calves will be awesome fronted, deep bodied, and super stout. While the Drivers, will produce ultra feminine heifers that will produce not only in the showing but also in the pasture. No matter which mating you choose, success is all but guaranteed. Offering 1 package of 3 embryos with a guarantee of one pregnancy, on each of the matings above, if embryo work is done by licensed embryologist.

Consigned by, Bonnell Farms Show Cattle

Lot Elle Embryos

11 Offering 1 package of 3 embryos by the mating below. Calves will be Mainetainers.

Ice Pick

Irish Whiskey

NTC 615 Ever Ready
Dameron PVF Raptor 702

JSCC Elle 76 (AAA #: 15983233)

JWK Elluna 9093

If you want to bank some great embryos, here's your chance. Elle was named Champion Angus many times in Iowa for the Core family. To put it simply, she was a standout that couldn't be missed. Not only was she a great show heifer, her first calf, sired by Dream On was sold in this sale last year to Shannon Welsh. He then resold the bull for \$20,000 to ABS Global. I would say the work is done here, and the only thing you need to make sure of is that you own these embryos. Guarantee 1 pregnancy if embryo work is done by a licensed embryologist.

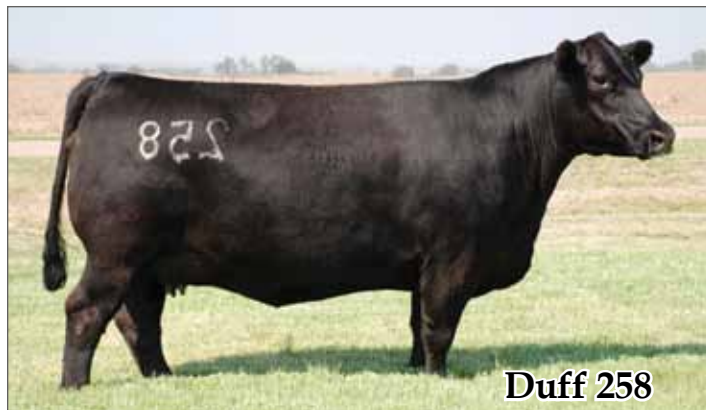
Consigned by, Scheetz Cattle Company

Lot Driver Semen

12 Offering 1 package of 3 units of Driver Semen, flush quality. Consigned by, Bonnell Farms Show Cattle.

Lot STF Dominance Semen

13 Offering 1 package of 3 units of Dominance Semen, flush quality. Consigned by, Bonnell Farms Show Cattle.



Duff 258



Driver



JSCC Elle



Irish Whiskey

Lot *BF Miss Anchor Embryos*

14-14A Offering 2 packages of 3 embryos by the mating below. Calves will be Mainainers.

Ice Pick

Irish Whiskey

NTC 615 Ever Ready
OCC Anchor 771A

BF Miss Anchor

Krugerand of Donamere

Lot *BF Miss Anchor Embryos*

14B Offering 1 package of 3 embryos by the mating below. Calves will be Club Calves.

Take Charge

Who Made Who

Glitter'n'Gold
OCC Anchor 771A

BF Miss Anchor

Krugerand of Donamere

Miss Anchor is a female who simply produces. She has already racked up a \$10,000 Landslide daughter, a \$7500 Double Vision daughter, and a Who Made Who daughter, BF Miss Lucy, who is currently residing in our donor pen. The only decision left to make here is which package of embryos to choose, as you can see from her production history Miss Anchor has hit it out of the park every way we have mated her.

Consigned by, Bonnell Farms Show Cattle

Lot *Miss Absolute Power Embryos*

15-15A Offering 2 packages of 3 embryos apiece by the mating below. Calves will be Registered Angus.

BC Marathon 7022

BC 7022 Raven 7965 (Sexed Heifer Semen)

OCC Blackbird 785H
Bush's Absolute Power

SH Miss Absolute Power 4096 (AAA #: 14838228)

RLH Raptor Lady 2096

Only want Angus show heifers? Here you go! 4096 was the high selling Angus heifer in the 2005 Iowa Beef Expo sale and went on the next day in the Junior show to be Reserve Champion Angus female. 4096 has produced several dollars worth of heifer calves and with this sexed female mating to Raven, it is a sure bet. There are not many opportunities to purchase all sexed embryo matings such as this, and the only reason we are selling them is that this cow flushes extremely well. Guarantee 1 pregnancy per package sold if embryo work is done by a licensed embryologist.

Consigned by, Scheetz Cattle Company



GF Maximus N391



BF Miss Anchor

Lot *Irish Whiskey Semen*

16-16A Offering 2 packages of 5 units of Irish Whiskey Semen, flush quality. Consigned by, Scheetz Cattle Company.

Lot *Irish Whiskey Semen*

16B-16D Offering 3 packages of 5 units of Irish Whiskey Semen, flush quality. Consigned by, Willie Morris Cattle Co.



Miss Absolute Power

Lot *Maximus 5 mL Sexed Semen*

17-17A Offering 1 package of 3 units, and 1 package of 2 units of 5 mL Heifer Sexed Maximus Semen

Lot 17 will contain 3 units of 5 mL Maximus sexed heifer semen, with Lot 17A containing 2 units of 5 mL Maximus sexed heifer semen. Winning bidder has the option to take both packages.

Consigned by, Willie Morris Cattle Company

Lot *Maximus 5 mL Sexed Semen*

18-18A Offering 2 package of 2 units of 5 mL Heifer Sexed Maximus Semen

Offering 2 packages of 2 units of flush quality 5 mL Heifer Sexed Maximus Semen.

Consigned by, Sandeen Genetics

Lot *Maximus 2 mL Sexed Semen*

19-19A Offering 1 package of 3 units, and 1 package of 2 units of 2 mL Heifer Sexed Maximus Semen

Lot 19 will contain 3 units of 2 mL Maximus sexed heifer semen, with Lot 19A containing 2 units of 2 mL Maximus sexed heifer semen. Winning bidder has the option to take both packages.

Consigned by, Willie Morris Cattle Company

Lot JS Untouchable Embryos

20 Offering 1 package of 3 embryos by the mating below. Calves will be half-blood Simmental.

DCC New Look 101

KCC Saginaw

KCC 26J

WAGR Dream Catcher 03R

JS Untouchable 21U (ASA #: 2444259)

RLH Miss Raptor L39N

This lot features an opportunity to purchase genetics on one of the up and coming half-blood Simmental cows in the country, JS Untouchable 21U. This Dream Catcher daughter was the 3rd Overall Female at the National Junior Classic and Reserve Foundation Female at the Iowa State Fair. In her short career 21U has already produced a trio of exciting Optimus Prime calves, who have garnered there share of attention on our farm. The mating to Saginaw will result in stylish, power packed calves who will carry an added shot of maternal power. Be sure you are on hand to purchase these embryos, they are sure to go up in value.

Consigned by, RS&7 Simmentals

Lot Duff 6116 Embryos

21 Offering 1 package of 3 embryos by the mating below. Calves will be half-blood Simmental.

FB Prime Cut 456L

Flying B Cut Above "Fat Butt" Sexed Heifer Semen

Dillions Ms Pretty Woman

OCC Nexus 826N

Duff Nex 270 Miss IR 6116 (AAA #: 15459492)

AR Miss Ireland 792B

Our top pick in the 2008 Duff Power+Plus sale, 6116 quickly earned her way to the donor pin. This OCC Nexus daughter is big ribbed, easy fleshing, and extra thick butted. We have three daughters retained. We are excited about this mating to "Fat Butt" as true foundation Angus Genetics coming together with one of the most exciting Simmental Bulls in a generation. Buy with confidence. The resulting heifer calves from this mating could be worth their weight in gold! Offering 1 package of 3 embryos with a guarantee of one pregnancy if embryo work is done by licensed embryologist.

Consigned by, Thurman Cattle & Lomax Farms

Lot Fat Butt 5mL Sexed Semen

22-22B Offering 3 packages of 3 units of 5 mL Fat Butt Sexed Heifer Semen, flush quality.

Offering 9 total units, selling in packages of 3 units, of 5mL Fat Butt Heifer Sexed Semen, winning bidder will have the option to take all 9 units.

Consigned by, Willie Morris Cattle Company

Lot DJ Salute Semen

23 Offering 1 package of 3 units of DJ Salute Semen, flush quality. Consigned by, Willie Morris Cattle Company.

Lot DJ Salute Semen

23A Offering 1 package of 3 units of DJ Salute Semen, flush quality. Consigned by, Jarr Cattle



JS Untouchable 21U



Duff Nexus 6116



Fat Butt

Lot Meyer Ranch 734 Semen

24 Offering 1 package of 3 units of Meyer 734 Semen, flush quality. Consigned by, Bonnell Farms Show Cattle.

Lot Signal Semen

25 Offering 1 package of 3 units of Signal Semen, flush quality. Consigned by, Bill Dwyer

Lot Leachman 600U Semen

26 Offering 1 package of 3 units of Leachman 600U Semen, flush quality. Consigned by, Clark Farms Simmentals.

Lot *HPF Miss Melody Embryos*

27 Offering 1 package of 3 embryos by the mating below. Calves will be PB Simmental.

GWS Ebonys Trademark 6N

LBS The Foreman 702T

LBS Ms G3

HC Power Drive 88H

HPF Ms Melody M011 (ASA #: 2144987)

Deep Creek Ms 600U H807

Package of three embryos Sired by LBS The Foreman out of HPF Ms. Melody M011, guarantee one pregnancy, if work is completed by a certified embryologist. Phenotypically M011 is one of the most powerful yet structurally sound females you will find. Melody has been a top producer for Hudson Pines where she was a lead donor for them until we acquired her last fall. M011's track record shows an average of over \$1000 per embryo, a flush brings \$10,000, and her calves have averaged over \$7500. Here is a Female that will add some major value to your breeding program. Mated to the Hot Foreman bull this mating could really be a homerun.

Consigned by, Ryan Cattle Company



HPF Ms Melody M011



LBS The Foreman

Lot *DNC Miss Erica Embryos*

28 Offering 1 package of 3 embryos by the mating below. Calves will be maintainers.

TC Dividend

Bush's Flashback

Viking

Draft Pick

DNC Erica E26 (AMAA #: 219105)

Unregistered Dam

DNC Miss Erica needs no introduction; she has graced the cover of multiple sale catalogs. This is a rare opportunity on a Donor that is a veteran when it comes to producing high quality cattle. Erica is known for producing wide based, deep bodied calves with a moderate frame. Offering 1 package of 3 embryos with no pregnancy guarantee, since there are no more in the tank.

Consigned by, Coon Creek Farm



Miss Erica

Lot *DHID Traveler 6807 Semen*

29 Offering 1 package of 3 units of Traveler 6807 Semen, flush quality. Consigned by, Bonnell Farms Show Cattle.

Lot *EXAR Lutton Semen*

30 Offering 1 package of 2 units of EXAR Lutton Semen, flush quality. Consigned by, Bonnell Farms Show Cattle.

Lot *Black Bear Semen*

31-31A Offering 2 packages of 5 units of Black Bear Semen, flush quality.

It's been 15 years since we first started this sale, and Black Bear still rules as the king for producing Clubby PB Simmental females. Black Bear is the only sire who has put cattle into this sale each and every year, including this one. Black Bear is proof positive that good cattle never go out of style. Be sure to compare the picture of B&D Black Widow, with the picture of the Lot 2 flush in this year's catalog. It's scary how similar these two females are.

Consigned by, Bill Dwyer

FOUNDATION FEMALE SALE, ACT I
"With Emphasis On Black Low Percentage Females!"
Every 1997 Heifer Calf will be sold. • None Held back!
Fancy Show Heifers Like This Sell!
B&D Black Widow

Junior Heifer Calf Champion at 1996 American Royal in Kansas City. She beat 200 heifer calves in her division—sired by Black Bear.
35 Black Bear Daughters Sell
"Your Source Of Foundation Females"